



**Avoid unnecessary pain in
your arm, shoulder, and neck
with Mousetrapper.**



Fight the Pain™

More and more of us spend our working days sitting in front of a screen. We sit still for too long in static positions that our bodies are not designed for. Many of us suffer from pain in our arms, shoulders and neck.

At Mousetrapper, we have a mission: No one should suffer pain due to working in an awkward position with a mouse.

In 1994, Swedish inventor Rolf Strömberg launched our first Mousetrapper – a centered pointing device that became an enormous success in Scandinavia and is now rapidly expanding throughout the rest of Europe. We now know, along with most ergonomics specialists and physiotherapists, that the strain of desk work can be avoided.

Mousetrapper is the mouse alternative that prevents repetitive strain injury and other problems that may arise when working with a traditional mouse. Because Mousetrapper is positioned centrally in front of the keyboard, it encourages an ergonomically healthy position that keeps your arms close to your body and your hands near the keyboard.

This helps you avoid and, in many cases, relieve strain injuries that can arise from stretching your arm beyond your natural shoulder width, as you do with a conventional mouse. You no longer have to reach beyond the keyboard while using the mouse. The wide, cushioned wrist support also relieves strain on your neck, shoulders, arms and wrists.

Try Mousetrapper – the wellness mouse.

Read more about us and our products at mousetrapper.com

Did you know that you can try a
Mousetrapper, free of charge?
Read more and try for free today at
mousetrapper.com/try-for-free



Made in Sweden – for people and the planet.

There is so much more to sustainability than choice of materials and transportation. Everything is connected - decisions made today have consequences for tomorrow. It is, of course, a matter of our planet and the future environment, but also about creating favourable conditions for employees, contributing to society's benefit and promoting sound business practices. At Mousetrapper, we want more than just a well-written policy. We really want to contribute and everyone has to make an effort. It will not be easy. Working as a manufacturer has consequences that are not immediately apparent. However, wherever possible, we want to be a part of an integrated whole and accept our share of responsibility.

DESIGNED, DEVELOPED AND MADE IN SWEDEN

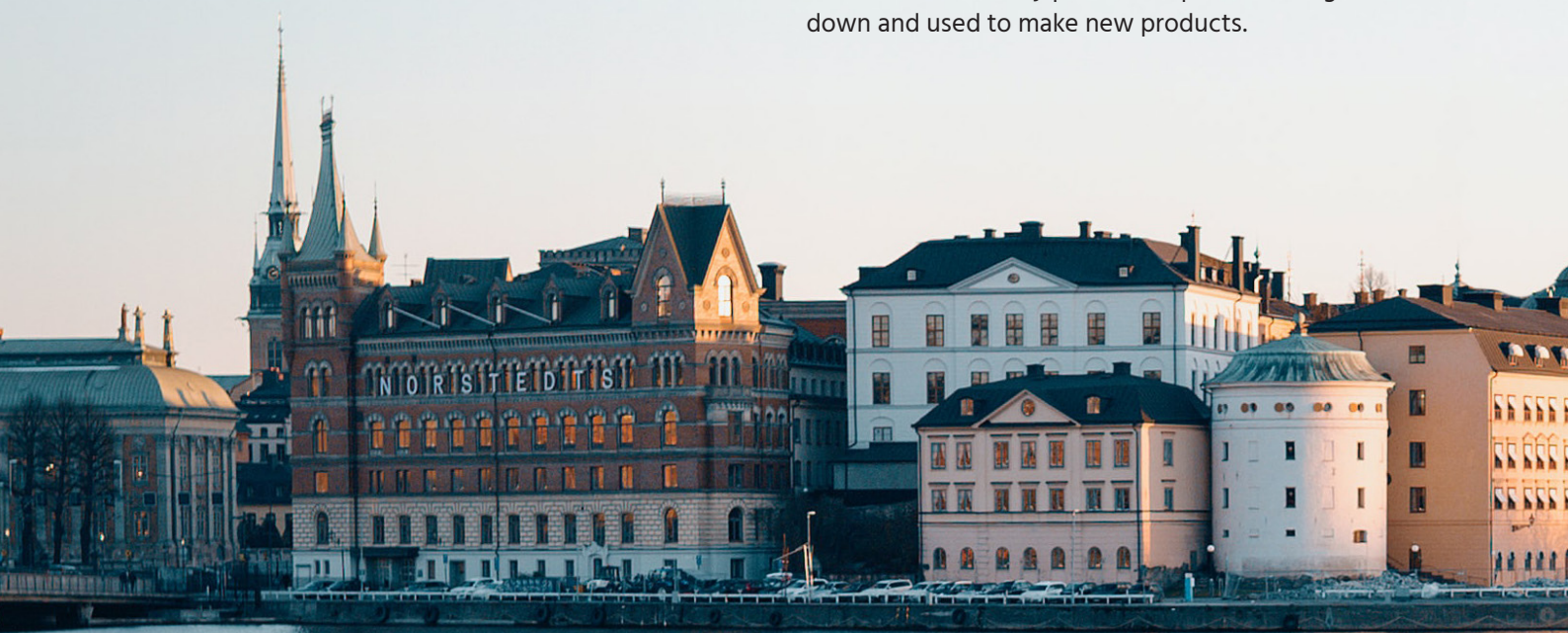
As we now produce more and more – in fact, most things – in our own premises just outside Stockholm, we gain better control over, for example, production times and quality. And since we have invested in the automation of many heavy or repetitive tasks, we also have a positive side effect. Humans are fantastic, but an automated station makes even fewer errors. Never really, if everything works as it should. This means that we can now produce to an even higher quality.

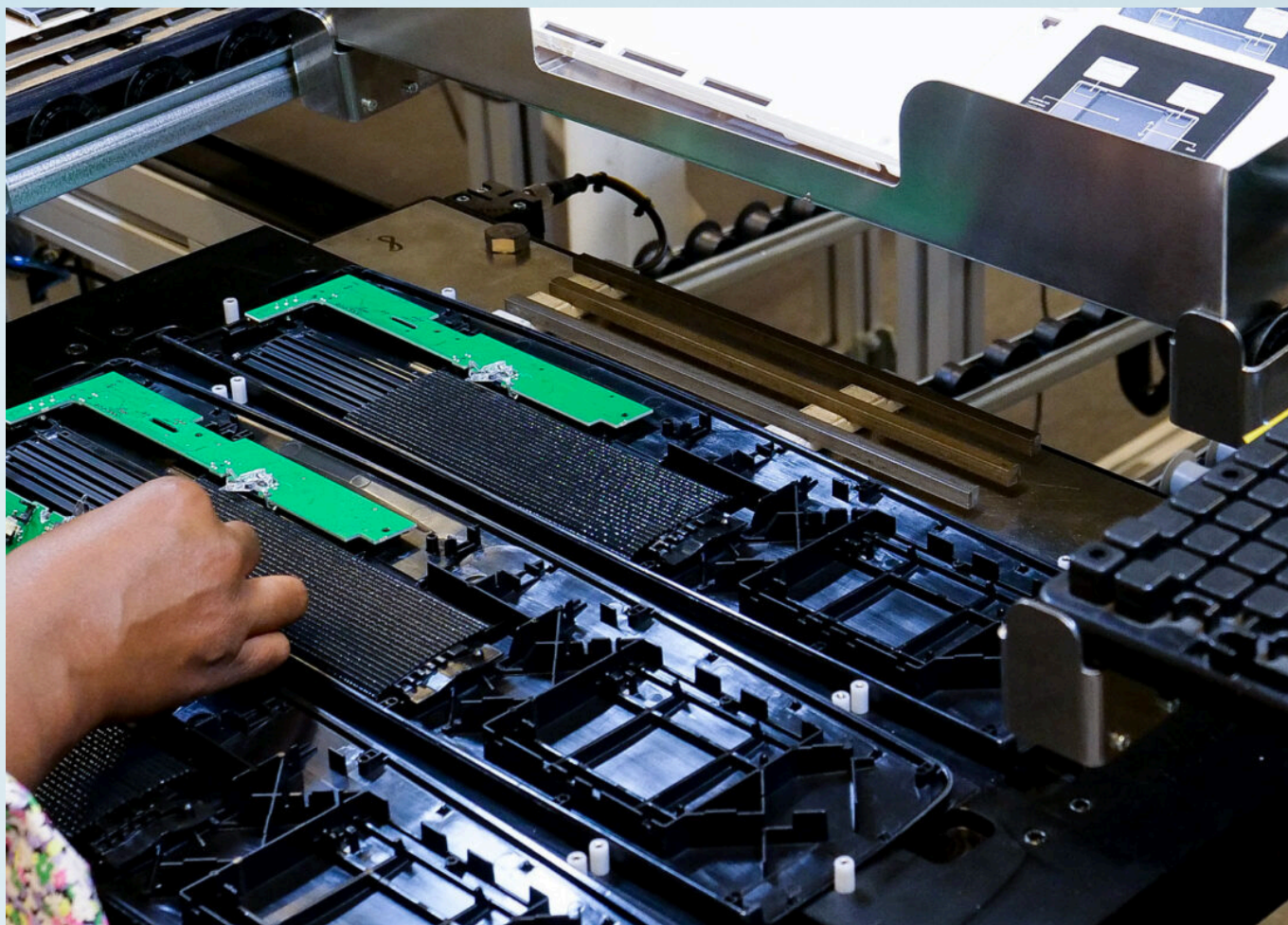
Another important aspect of having the production in our own premises is that we also avoid a lot of transport. Transport is one of the biggest environmental culprits, and in line with our sustainability strategy, we are working hard to reduce our transport needs. So the more we can produce in our own premises, the fewer long-distance transports are needed, which is positive and reduces our carbon footprint.

HOW CAN A MANUFACTURER IN SWEDEN CONTRIBUTE TO A BETTER ENVIRONMENT?

Mousetrapper's products are not only designed to last but also to minimise environmental impact. These are not throwaway products. Our Mousetrappers have a reputation for longevity. Some people think they last too long – we don't agree, because we're proud of our quality. The products are easy to clean, and spare parts for ongoing service and maintenance are available - all key to prolonging their longevity. And they are designed to be easily recycled to the maximum extent possible once they finally reach the end of their service life.

Our suppliers are mainly located in our vicinity, and have been selected with care. For example, plastic components are manufactured in Estonia and circuit boards in Sweden. Also, we have chosen suppliers that we can work close to and exert real influence. Naturally, we are always on the lookout for functional, recyclable materials. We also make sure that faulty plastic components are ground down and used to make new products.





SOUND BUSINESS PRACTICES PRODUCE LONG-TERM OUTCOMES

Of course, it is easy to take shortcuts and cheat one's way to quick and easy victories. But at Mousetrapper, we want to think long-term. If we can develop competitive products and endeavour for long-term professional collaborations with our partners and suppliers, we believe we will be rewarded with long-term success. We want to build a culture based on transparency and trust in these relationships - where we can rely on each other and together create sound business practices.

HAVE ANY QUESTIONS OR IDEAS TO HELP US IMPROVE? PLEASE FEEL FREE TO CONTACT US.

Sustainability can easily become another item to check off a to-do list. However, that's not how we want it to be, and we would appreciate your help. We are constantly looking for ways to develop our business and products from a holistic perspective – where the environmental, social and financial responsibility go hand in hand.

Anders Ehnбом, CEO Mousetrapper

Scan the QR code to learn more about our sustainability work.



A Mousetrapper for everyone



Advance 2.0

Our best-seller! Developed to give you all the ergonomic benefits, and with 6 programmable buttons, you have great flexibility to tailor it to your needs. Available in two colors.

- » Control Pad with click and scroll
- » 6 programmable buttons
- » Replaceable wrist pads
- » Adjustable height with a foldable friction base

- » 2000 dpi resolution
- » Product codes:
MT112 – White, MT120 – Coral



Lite

The entry-level model. Designed for those who only need the basic features but all the ergonomic benefits. Available in two colors.

- » Control Pad with click function
- » 4 buttons
- » USB Plug and Play

- » 1500 dpi resolution
- » Product codes:
MT114 – Titanium Gray, MT115 – Red



Delta

The unique model. Delta is operated using our Control Bar made of carbon fiber, which allows for a relaxed, centered position. With 7 programmable buttons, you can work even more efficiently. Available in two colors and sizes. It's also made from recycled plastic!

- » Control Bar with click and scroll
- » 7 programmable buttons
- » Replaceable wrist pad
- » Made from recycled plastic
- » Adjustable friction/height support for the keyboard
- » 2 USB ports (3.3V) for charging and connecting additional devices

- » 4000 dpi resolution
- » Product codes:
MT150 – Extended (Gray)
MT151 – Regular (Gray)
MT152 – Extended (Black)
MT153 – Regular (Black)



Advance 2.0+

The upgraded version. It has 2 more buttons and more luxurious wrist pads than Advance 2.0, but the same ergonomic benefits. It's also made from recycled plastic!

- » Control Pad with click and scroll
- » 8 programmable buttons
- » Replaceable wrist pads
- » Made from recycled plastic

- » Adjustable height with a foldable friction base
- » 2000 dpi resolution
- » Product code: MT122



Prime

The most premium model. Just like Advance 2.0+ it has 8 programmable buttons and luxurious wrist pads. But with Prime you can work wirelessly via Bluetooth. It's also made from recycled plastic!

- » Control Pad with click and scroll
- » 8 programmable buttons
- » Replaceable wrist pads
- » Option to work wirelessly
- » Made from recycled plastic

- » Adjustable height with a foldable friction base
- » Battery life of up to 4 months
- » 2000 dpi resolution
- » Product code: MT123



Alpha

2-in-1. Alpha is our most advanced product – combining a centered mouse with a keyboard. With 19 programmable buttons you get even more flexibility and efficiency. You can also work wirelessly via Bluetooth.

- » Ergonomic mouse with built-in keyboard
- » Control Pad with click and scroll
- » 19 programmable buttons
- » Option to work wirelessly
- » Battery life of up to 2 months
- » 2000 dpi resolution
- » Product code: MT119

Customise your Mousetrapper to suit your needs with MT Keys!



Enhance the Mousetrapper experience by adapting the functions of the buttons to suit your workflow. Your Mousetrapper comes pre-installed with functions as above, but with the help of our MT Keys program, it is easy to change them so that you get your Mousetrapper exactly the way you want it. A button can have a keyboard shortcut, function or text string. For example, you can choose a button to lock the computer, switch program windows, or something else entirely. There are over 70 different functions to choose from. By changing the function of the buttons to suit you, you can reduce the number of clicks and make your everyday life more efficient. The settings are stored in the device, no drivers are needed.

To customise the buttons, make sure that your Mousetrapper is connected to the computer using the accompanying USB cable, and visit mousetrapper.com/software. Then it's just a matter of getting started. Don't forget to save when you are done. It's as easy as that!



Try a Mousetrapper in peace and quiet. Free of charge!

We want more people to understand how beneficial it is to work ergonomically, and experience the difference it can make to use a centered mouse. At the same time, we understand that transitioning from a traditional mouse to an ergonomic one may feel like a big step if you haven't tried one before. That's why we offer a free trial period so that you, at your own pace, can experience how easy and smooth it feels to work with a Mousetrapper.

Created by the Swedish inventor Rolf Strömberg in 1994, Mousetrapper has redefined the way we interact with our computers, especially in workplaces. By using a centered mouse, such as Mousetrapper, you automatically work with your hands centered in front of you and within your shoulders. This promotes an ergonomic working posture that keeps arms and hands relaxed, crucial for preventing strain in the arms, shoulders, and neck that could later lead to discomfort.

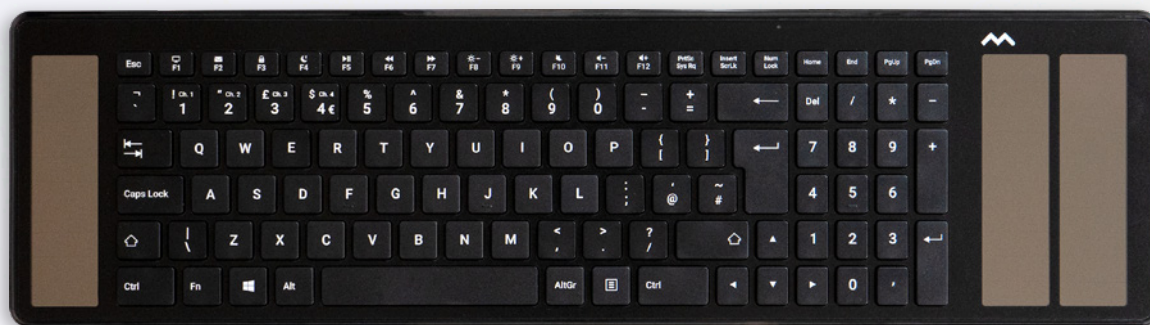
Test it out for free today by scanning the QR code
or visit **mousetrapper.com/try-for-free**



Keyboards for all your needs!

At Mousetrapper, we design keyboards that do more. Each model is built to meet real needs – whether it's sustainable power, compact flexibility, or seamless ergonomics. With thoughtful features and a focus on comfort, our keyboards are made to fit your work, your way.

Here you can find a keyboard that suits your needs.



Type

A keyboard specifically designed to pair perfectly with your Mousetrapper. Type is powered by solar cells, features 11 programmable buttons, and is made from recycled plastic!

- » 11 programmable buttons
- » Charged by solar panels
- » Wireless via Bluetooth. Can also be connected via USB.
- » Adjustable height both front and back

- » Can be connected to four devices in parallel
- » Made from recycled plastic
- » Product code: TB406



Type Midi

A compact keyboard, ideal for those on the go. Type Midi has ergonomic features, numeric keys, wireless Bluetooth connectivity, and is made from recycled plastic!

- » Plug n' play via cable or quick wireless installation
- » Adjustable height both front and back
- » Wireless via dongle or Bluetooth. Can also be connected via USB.

- » Made from recycled plastic
- » Product code: TB433



Type Mini (Wired)

A sleek, compact, and ergonomic keyboard. It is easy to carry with you, and perfect for small spaces. Made from recycled plastic!

- » Plug n' play via cable
- » Adjustable height both front and back
- » Connection via USB-C (USB-A adapter included)

- » Made from recycled plastic
- » Product code: TB413



Type Mini (Wireless)

A sleek, compact, and ergonomic keyboard. Type Mini works wireless via Bluetooth, is easy to carry with you, and perfect for small spaces. Made from recycled plastic!

- » Plug n' play via cable or quick wireless installation
- » Adjustable height both front and back
- » Wireless via dongle or Bluetooth. Can also be connected via USB.

- » Made from recycled plastic
- » Product code: TB453



NumPad

A compact wireless numeric keypad that can be placed on either the right or left side of your keyboard. Made from recycled plastic!

- » Excellent companion to our Mousetrapper Alpha or Type Mini
- » Works wirelessly via a 2.4 GHz dongle

- » Made from recycled plastic
- » Product code: TB420

Additional accessories

 Mousetrapper

Laptop/Tablet Stand

Mousetrapper's Laptop/Tablet Stand helps you keep your head in an ergonomic position and your eyes at the right height.

- » Length: 254 mm
- » Width: 183/267 mm (min/max)
- » Height: 10/184 mm (min/max)
- » Weight: 430 g
- » Product code: TB402

Armrests

Support your forearms with an armrest and avoid strain in your arms. Available in two different versions.

Asymmetrical

- » Width: 680 mm
- » Depth: 220 mm
- » Height: 20 mm
- » Waist: 40 mm
- » Weight: 1400 g
- » Product code: TB215

Symmetrical

- » Width: 575 mm
- » Depth: 220 mm
- » Height: 25 mm
- » Waist: 40 mm
- » Weight: 1100 g
- » Product code: TB216

Standfriend

It's an excellent solution to vary your working position easily. By switching between standing and sitting, you feel better and have more stamina. Available in two colours.

- » Width: 600 mm
- » Depth: 495 mm
- » Height: 680 mm
- » Weight: 6.5 kg
- » Working height: 150-190 cm
- » Max. screen size: 17"
- » Max. load: 7 kg
- » TB501: Black metal stand
- » TB502: Light gray metal stand

 Mou



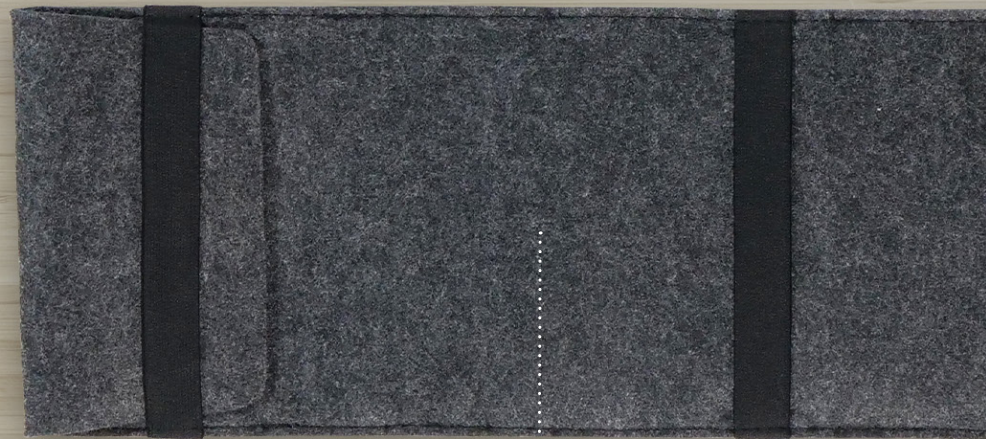


Armrest Split

Support your forearms and avoid muscle tension in the neck and shoulders with the Split armrest.

Dimensions and weight refer to one piece. Always delivered in pairs.

- » Width: 305 mm
- » Depth: 195 mm
- » Height: 24 mm
- » Weight: 826 g
- » Product code: TB217



Wrist Support

Helps to address one of the most basic ergonomic challenges – support for your forearms. Available in two sizes.

Small

- » Width: 320 mm
- » Depth: 72 mm
- » Height: 20 mm
- » Weight: 92 g
- » Product code: TB601

Large

- » Width: 475 mm
- » Depth: 72 mm
- » Height: 20 mm
- » Weight: 136 g
- » Product code: TB602

Sleeve

It's a soft case designed to protect our ergonomic mice and keyboards. It folds to fit different products and made from recycled PET.

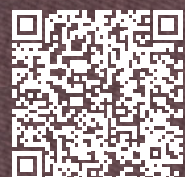
- » Width: 608 mm
- » Depth: 160 mm
- » Height: 7 mm
- » Weight: 86 g
- » Product code: TB230

MouseTrapper®

Active

The Active standing mat helps prevent tiredness and aches in your feet, and helps you maintain a good posture when standing up and working.

- » Width: 740 mm
- » Depth: 450 mm
- » Height: 18 mm
- » Weight: 875 g
- » Product code: TB401



Scan the QR code to learn more about our accessories.



The ergonomic workplace.

At Mousetrapper, we are attentive to details, but we also think about the bigger picture. An interplay between several elements is required to create a sustainable and healthy workplace. An ergonomic workplace is important for enabling us to perform and feel our best. Sit-stand desks, regular breaks and ergonomic exercises are important components for a healthy environment.

Mousetrapper's principal product is an ergonomic mouse designed to minimise the risk of strain and imbalanced loading in the arms, shoulders, back and neck. But we also focus on keyboards and accessories that form important components in an ergonomic work environment. Complement your workplace with products, such as

our keyboards, standing desk mat, laptop/tablet stand, armrests, our portable standing desk etc. By looking at the whole picture, you can reduce the risk of pain and repetitive strain injuries, and create a sustainable environment with a thriving workforce.

If you want more ergonomic tips and suitable, effective exercises – scan the QR code or visit **mousetrapper.com/ergonomics**



More ergonomic tips!



SCREEN

It is also important to consider the position of the screen. Your eyes prefer to look down. Place the upper part of the screen at eye level, or slightly lower.



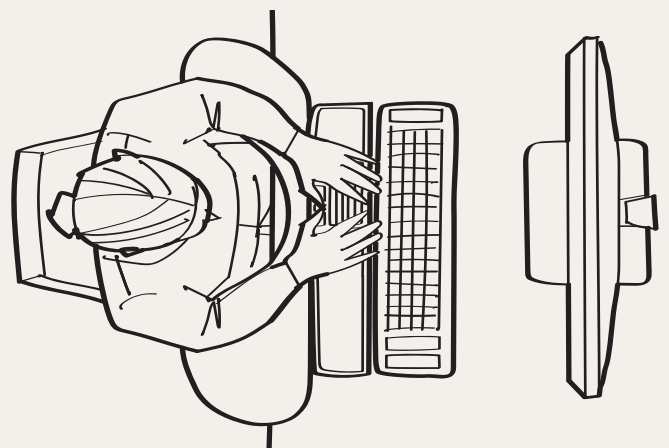
LAPTOP STAND

If working on a laptop, consider a laptop/tablet stand and a standalone keyboard to achieve a correct, comfortable height.



STAND UP

By working standing up, we burn almost twice as much energy as when we sit down. A mat prevents your feet from getting tired, which means you can stand for longer periods of time.



ARMREST

Another aid is an armrest that supports a naturally centred and relaxed position.

